



WOMEN T-SHIRTS
STELLA INVENTS SLUB



STTW145

The women's v-neck raw edge t-shirt

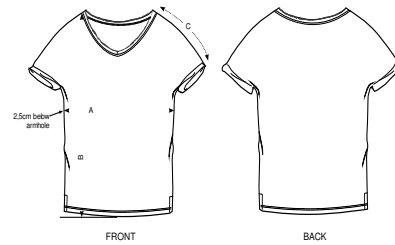
Slub Single Jersey
 100% Organic ring-spun combed cotton
 130 GSM

- Cap dolman sleeve
- Sleeve hem rolled up with bartacks
- Raw edge neck collar with single topstitch
- Bottom hem with narrow double topstitch
- Slit at side seams

RELAXED FIT

| | | | | | |
|------|----|---|---|---|----|
| XXS* | XS | S | M | L | XL |
|------|----|---|---|---|----|

Size guide



| SIZES | | XXS | XS | S | M | L | XL |
|-------|---------------|-----|------|----|----|------|----|
| A | Half Chest | 43 | 45.5 | 48 | 51 | 54 | 57 |
| B | Body Length | 64 | 66 | 68 | 70 | 72 | 73 |
| C | Sleeve Length | 18 | 18.5 | 19 | 20 | 20.5 | 21 |

Printing Specifications

Fits all kinds of print techniques. Please download our printing guide for details.

WHITES



COLORS



*Size available on limited number of colours. Please check our webshop for latest information

STANLEY/STELLA

Wash similar colours together, do not iron on print, wash and iron inside out.

